



ACCURATE MANUFACTURING RESOLUTION
An ISO 9001:2015 Certified Company

**AMR Engineering works
Private Limited**

COMPANY PROFILE



Works: Dehradun Road, 7 Km Mile Stone Near RadhaSwami
Satsang Bhawan, Saharanpur (U.P.) 247001
Contact No: +91-9897840165, 8595444802
Email: Md@amengineeringworks.com
Email : amengineering231@gmail.com
Website: www.amengineeringworks.com

Designers

Having our own highly design engineers following international standards ASME Section VIII for designing of pressure vessels & American 3 A standards for other Dairy & Food Processing Equipment's

ABOUT US

AMR Engineering Works Pvt Ltd. is a budding engineering company which deals with designing, manufacturing, fabrication and execution of projects in the AMR Engineering Works Pvt Ltd. of dairy, food beverages, pharmaceuticals and herbals industries. Established in 2015-2021 AMR Engineering Works Pvt Ltd. offer most effective product by providing the end to end solution right from designing of equipment's, it's manufacturing, and processing and installing services. The equipment's are designed and developed keeping in view hygiene requirement of dairy, food beverages & pharmacy application. Our key products include evaporators, dryers, dairy equipment dairy/vegetables/fruits processing plants, mixers, storage tank etc. AMR Engineering Works Pvt Ltd. is synonymous with best classes' quality and service in the food, dairy & biotech industry due to its people, technology, engineering capability and skill. The company has well established facilities and expertise to design and deliver the most reliable, efficient and innovative solutions for the process and overall project implementation for our valued clients. We are a powerful combination of experienced, well qualified engineers and extremely skilled workforce to be a dominated player in manufacturing of market-leading products on a worldwide basis. Our vision is to provide high energy effective projects/equipment for dairy, food and beverage industries across the globe through development of latest technologies. We understand the need of the costumers , who are under increasing economic, competitive and regulatory pressures and partner with them to design and deliver the most reliable, efficient and innovative solutions for the process and overall project implementation

About our leader:

Mr. Kaleem Malik has been successfully executing several projects and has a versatile experience of 28 years in the areas of:

Mr. Mursaleen Ahmad has been successfully executing several projects and has a versatile experience of 19 years in the areas of:

- Engineering consultancy in the field of food, chemical and various process industries.
- Designing and fabrication of stainless and mild steel equipment's, dairy, food & chemical plants.
- Plant operations
- Erection and commissioning of dairy, food & chemical plants.



Milk Processing Section



Ghee Processing Section



Curd Processing Section



Paneer Section

LIST OF EQUIPMENTS UNDER AMR ENGINEERING WORKS PVT LTD.SCOPE OF BUSINESS :

➤ Dairy Equipment's

- Road Milk Tanker
- Weigh Bowl
- Dump Tank
- Milk Silo/Milk Storage Tank
- Milk Cream Pasteurises
- Butter Churn
- Butter Melting System
- Ghee Boiler
- Khoa Pan
- Cheese Kettle
- Bottle Sterilizer

➤ Evaporator & Dryer Equipment's

- Triple Concentric Tubular Heater
- Disc Atomizer
- Rotary Through Valve
- Blow Through Valve
- Steam Radiator
- CIP Spray Nozzle (Rotary Type, Turbine Type)
- Sifter

➤ Mixer

- Twin Shaft Mixer
- Paddle Mixer
- Turbo Blender
- Sigma Blender
- Ribbon Blender

➤ Miscellaneous Accessories

- Screw Conveyor
- Compactor
- Online Sieving System
- Milling Machine

AMR ENGINEERING WORKS PVT LTD.HAS EXPERTISE IN

➤ Evaporators

- Falling Film Evaporators
- Forced Recirculation Evaporator
- Batch Type
- Scrapped Surface Evaporator
- Wiped Film Evaporator
- Short tube Calandria
- Agitated Thin Film Evaporator
- Batch Evaporator

➤ Dryers

- Spray Dryer
- Fluid Bed Dryer
- Vacuum Band Dryer
- Vacuum Tray Dryer
- Ring Dryer
- Rotary Dryer
- Roller Dryer
- Flash Dryer
- Agitator thin Film Dryer

TURN KEY PROJECT'S

ACCURATE MANUFACTURING RESOLUTION

An ISO 9001:2015 Certified Company

➤ Dairy Processing Venture

- Liquid Milk Processing Plant
- Ghee Processing Plant
- Dahi/Lassi/Chhach Processing Plants
- Yoghurt Plants
- Flavoured Milk Plant
- Paneer Processing Plant
- Continuous Khoa Making Plant
- Ice Cream Plant
- SMP/WMP/Dairy Whitener Powder Plant
- Sweetened Condensed/Evaporators Milk Plant
- Butter Oil Plant/Anhydrous Milk Fat Plant
- Casein/WPC/DM whey Powder / lactose Plant

- Malted Milk Powder Plant

➤ **Miscellaneous Accessories**

- Screw Conveyer
- Compactor
- Online Sieving System
- Milling Machine

➤ **Industrial/Distillery Effluent Venture**

- Zero Effluent Discharge Plant

➤ **Instant Tea & Instant Coffee Powder Venture**

- Tea/Coffee Processing Plant
- Tea/Coffee Powder Plant

➤ **Starch & Malt Extraction Venture**

- Malt Extract Plant From Barley
- Glucose and Maltodextrine Plant From Brocken Rice

➤ **Fruits And Vegetables Processing Venture**

- Tomato – Ketchup / Concentration / Powder Plant
- Fruit juice / Mango – Concentration / Powder Plant



Crate Washer



Vertical Milk Storage Tank



Horizontal Milk Storage Tank



Horizontal Milk Storage Tank



Butter Churn



Butter Churn



Triple Jacket Vessel



Can Washer with Can Conveying System



Flow Plate



Flow Plate



Milk Pouch Packing Machine with Crater Conveyor





Paneer Press



Paneer Tank



CIP Tank



CIP Tank



Holding Tube



Holding Tube



Mixer Blender



Mixer Blender



Milk Evaporator Plant



Milk Evaporator Plant





Milk Powder Plant

DAIRY PROCESSING PLANT

➤ Liquid Milk Processing

AMR Engineering Works Pvt Ltd. offer a qualitative range of liquid milk processing plant the plant is used to process liquid milk which contains a variety of minerals, such as calcium, potassium, sodium, phosphorus and magnesium with carbohydrates, lactose, protein, and fat AMR Engineering Works Pvt Ltd.offers milk processing plant of capacity 5,000 to 10,00,000liter milk every day. The milk processing plants offered by us to our clients are on a turnkey basis.

The fat and SNF content have been adjusted to a certain level for standardized milk production. The standardization is done either by addition of SMP or by skimming of milk from cream separator. The fat and SNF contents may be varied according to product requirement.

The calculated amount of potable water is heated up to 38 deg c and is received in SS mixing tank equipped with an agitator. Then calculated amount of SMP/butter oil/ unsalted butter is slowly added at the point of agitation and the mixer is thoroughly agitated till it dissolves completely. The mixture is pumped through a filter and pasteurized and homogenized to ensure proper emulsification of milk fat.

Type of Milk	Fat	SNF
Standardized milk	4.5%	8.5%
Full cream milk	6.0%	8.5%
Toned milk	3.0%	8.5%
Double toned milk	1.5%	9.0%
Skim milk	0.5%	8.7%

➤ Curd Processing Unit

Capacity :

500 litres/hr, 1000 litres/hr, 1500 litres/hr,
2000 litres/hr, 3,000 litres/hr ,

5,000 litres/hr , 10,000 litres/hr , 20,000
litres/hr

Backed by our state-of-the-art manufacturing unit, we offer **Curd Processing Unit** to our clients. Our offered processing unit has tremendous capacity for processing curd and can be installed with ease. Moreover, it comprises of a large standardization tank and effectively performs processes like curd pasteurization and homogenization. The inoculation tank and curd incubation unit enable a systematic production process within the time limit.

Features:

- Speedy operations
- Low maintenance
- High performance

We manufacturer Curd processing unit: **MANUFACTURING RESOLUTION**

Capacity range: 500 Ltr. to 20,000 / Day Consisting of: **An ISO 9001:2015 Certified Company**

- Standardization Tank
- Curd pasteurization
- Homogenization
- Inoculation tank
- Curd Incubation
- Curd trolleys
- Curd filling machines- 600 Cups to 2400 cups / hrs
- Curd blast room, Etc.



➤ Butter Melting Unit

Capacity : 300 kg/h - 4000 kg/h

Backed by our rich professional expertise, we are able to offer meticulously designed **Butter Melting Unit**. This machine is used for melting butter for manufacturing Ghee. The offered machinery is known for its tremendous melting capacity. Moreover, clients can avail this unit from us in customized specifications to meet their exact needs.

Features:

- Power saving
- Excellent melting capacity
- Easy operations

Specifications:

- Capacity range: 300 kg/h - 4000 kg/h

We are renowned manufacturer of continuous butter melting units, for melting of butter to manufacture Ghee. The Capacity range from 300 kg/h - 4000 kg/h.

Features of our butter melting unit are:

- Heating media / Hot water
- Easy Operable
- Energy efficient
- Customized manufacturing as per individual client's capacity need



➤ **Ghee Manufacturing Unit**

Automatic Grade Semi-Automatic, Automatic, Manual

Being one of the trusted names in this domain, we are ardently engaged in manufacturing **Ghee Manufacturing Unit**. The offered unit is designed for manufacturing ghee by melting butter and is in strict compliance with the established industry standards. This unit can be customized and is delivered within the promised time-frame.

Features:

- Efficient performance
- Easy to operate
- Low maintenance

➤ Paneer Making Machine

Design Type

Standard

Backed by skilled workforce, we are able to offer **Paneer Making Machine** to cater to the various needs of our clients. Our offered product is manufactured using high quality raw materials procured from reliable vendors. The offered equipment are regarded for their easy installation, operational efficiency and long-term functionality.

Features:

- Compact design
- Highly efficient
- High capacity

ACCURATE MANUFACTURING RESOLUTION

We manufacturer Paneer processing Equipment's consisting of:

- Paneer Vat 500 ltrs to 3000 ltrs
- Whey processing equipment's
- Pneumatics Paneer press
- Pneumatic Paneer portioning device
- Vacuum packaging machine



➤ Ghee Plant's

Design Type

Customized

Ghee Plants: Our **Ghee Manufacturing Plants** are designed with precision and the machines include **Ghee Boiler, Pre- Stratification Tank, Ghee Settling vat, Ghee storage tank and Ghee Clarification Unit**. The plant we provide is manufactured completely in line with the User's requirement and we leave no stones unturned in providing the best after sales service.

Features:

- Huge production capacity

- Easily Expandable
- Low maintenance costs
- Easy operation

The Ghee Manufacturing Plant consists of the following:

Particulars	Capacity
Ghee Boiler	500-3000 Kg
Pre- Stratification Tank	1-5 KL
Ghee Settling Tank	500-5000 Liters
Ghee Storage Tank	1000- 15000 Liters
Ghee Clarification Unit	1000- 2000 Liters/ Hour



➤ Spray Dryer's

Material

SS-304, SS-304L & SS-316

Usage/Application	100 Kg/Hour to 2500 Kg/Hour (5 TPD to 40TPD).
Design	Customized

Being a reputed name in the industry, we are actively engaged in offering a wide range of **Spray Dryers** to clients pertaining to multiple industries. Our offered precision engineered plant is based on advanced technology and is characterized by high capacity. Along with this, we offer this dryer in customized options as per the clients' specific requirements at very affordable rates.

Features:

- High performance
- Large production capacity
- Cost-effective

Details:

AMR Engineering Works Pvt Ltd. offers most modern Spray Drying Plants for Dairy and Food Industries based on indigenously developed technology. As drying is an energy intensive process and dryers are expensive piece of equipment, AMR Engineering Works Pvt Ltd. offers most economical dryers matching the specific requirements. We are a trusted manufacturer & supplier of "**SPRAY DRYERS**" in all over India & abroad for milk processing plants. Our drying is best for transformation of feed from fluid state to dried form. And this is done by spraying the feed into hot drying medium continuously. Our dryers are suitable for feed in different forms like liquid, solution, suspension or paste and it convert them to powder consisting of single particles. Atomization is done using High Pressure Nozzles, High Pressure Air and Centrifugal Disc Atomizer. The heating of drying air can be either steam coils or Thermic Fluid or air heater according to the service condition available. The unique Fines Re-circulation system produces highest quality agglomerated powder. Conversion of feed depends on the physical & chemical property, design of the dryers and its operational capacity. With years of experience & in depth technical analysis, we have been successful in manufacturing dryers that can deliver powder as per client's need.



AC
An

TM

ON
ny

➤ Crate Washer

Application

Washer

Backed by our well-developed manufacturing plant, we offer **Crate Washer** to our revered clients. It is widely used for washing crates in those industries in which crates are used for handling as well as maintaining hygiene of the products. Therefore, our offered product is mainly used in dairy and food processing industries.

Features:

- Long service life
- Fine finish
- Excellent performance



➤ Vertical Storage Tank

Storage Capacity	1000-5000 L, 5000-20000 L, 20000-50000 L, 50000-150000 L & 150000-200000 L
Tank Orientation	Vertical
Storage Material	Milk, Chemicals, Water, Oils
Steel Grade	SS316, SS316L, SS304, SS304L

We are one of the well-established names in this domain, offering **Storage Tanks** that is utilized in many industries. Our offered tanks are well designed by our engineers to allow maximum storage. This plant is made available in two design variants: Vertical. Owing to its bulk storage capacity, it is widely used in dairy and food processing industries.

Features:

- High storage capacity
- Easy operations
- Long service life

Specifications:

Capacity:

- Vertical Tank: 1000 to 2,00,000 ltrs

We manufacturer Storage Tanks for Dairy & Food processing industries , The material of construction of these tanks are in Stainless Steel conforming to AISI 304 / 316 / 316 L duly insulated with PUF / Thermocol with suitable Agitator . The Design of these tanks are in both: Vertical shape

Capacity:-Vertical Tank - 1000 to 2,00,000 ltrs



ACCURATE MANUFACTURING RESOLUTION
An ISO 9001:2015 Certified Company



➤ Horizontal Storage Tank

Storage Capacity

1000-5000 L, 5000-10000 L, 10000-40000 L

Tank Orientation

Horizontal,

Storage Material

Milk, Chemicals, Water, Oils

Steel Grade

SS316, SS316L, SS304, SS304L

We are one of the well-established names in this domain, offering **Storage Tanks** that is utilized in many industries. Our offered tanks are well designed by our engineers to allow maximum storage. This plant is made available in two design variants: horizontal. Owing to its bulk storage capacity, it is widely used in dairy and food processing industries.

Features:

- High storage capacity
- Easy operations
- Long service life
-

Specifications:

Capacity:

- Horizontal tanks: 1000 to 40,000 ltrs
-

We manufacture Storage Tanks for Dairy & Food processing industries, The material of construction of these tanks are in Stainless Steel conforming to AISI 304 / 316 / 316 L duly insulated with PUF / Thermocol with suitable Agitator. The Design of these tanks are in both : Horizontal shape.

Capacity :-

Horizontal tanks - 1000 to 40,000 ltrs



➤ Introduction

AMR Engineering Works Pvt Ltd. is a leading engineering Company for fabrication, erection, installation and commissioning of dairy Processing / Fruit Processing / Chemical / Biotechnology / Distillery / Cold storage plant. We specialize in Evaporators and Dryers, Pressure vessels, Storage tanks, Butter Channel, Road Milk Tanker, Screw Conveyor, Blenders, Pipe Line. MS & SS Structure work which is used for Dairy, Fruits, Distillery / Chemical / Biotechnology Industries. And we also provide the Labour for Fabrication and Erection for the Foregoing Countries or in India at anywhere. And we also provide service to the company for the further requirements as renovation or any kind of problem in operate the plant.

The company has well established facilities and expertise to support projects and to provide a wide range of Engineering and Fabrication Services for clients. We have an office at Saharanpur. And we can fabricate the equipment behalf on the project need at the site. And it is made with Multiple Process Equipment on high quality with standard specifications. We had a wide range of tools & tackles which is highly needed for fabrication, erection etc. (the list of tool & tackle is attached with this page).

Moreover, with the co-operation of technical, administration and financial professional, the company has fast grown in continuity and has proven record among its clients in all over India. (the clients and man power list is given below).

➤ Quality :

The primal strength of our organization is based upon the unified efforts of our personnel we are able to provide superior quality equipment to our valued clients from different industrial units.

We give prime importance to the quality of our range of machineries with the high-tech testing facilities and highly Skilled & trained Staff & Auditors ensure that quality standard are strictly adhered too for – Raw material, Production stages & products testing.

The strict quality check procedures help us ensure that machines can be easily operated easily modified & gives high.

We work according to the all rules and regulations of safety, and we maintain all the latest technology and standard of high quality to provide the customer satisfaction in our work.

Complete Fabrication Solutions

Be it a simple fabrication or machined component through to complex assemblies requiring fabrication, heat treatment, trial/final assembly, surface treatment, testing and quality control documentation. We have got your project covered. AMR Engg. works with all grades of carbon and stainless steel such as 304, 316, 253MA, Safex as well as many other materials. More exotic requirements can be sourced via our extensive network of suppliers. Alfa offers a flexible approach meaning that no job is too large or small. Please see below for more information on some of the services we offer.

Manufacturing and Steel Fabrication

AMR Engg. is qualified to ISO 9001:2015. All of our personnel are regularly re-qualified to a minimum welding standard of IS/NZ 1554.1 SP. Additional weld procedures and qualifications are attained as required for specific jobs. We are able to manufacture from highly detailed manufacturing drawings or with the minimum of instructions.



Fabrication at JSW Dolvi plant

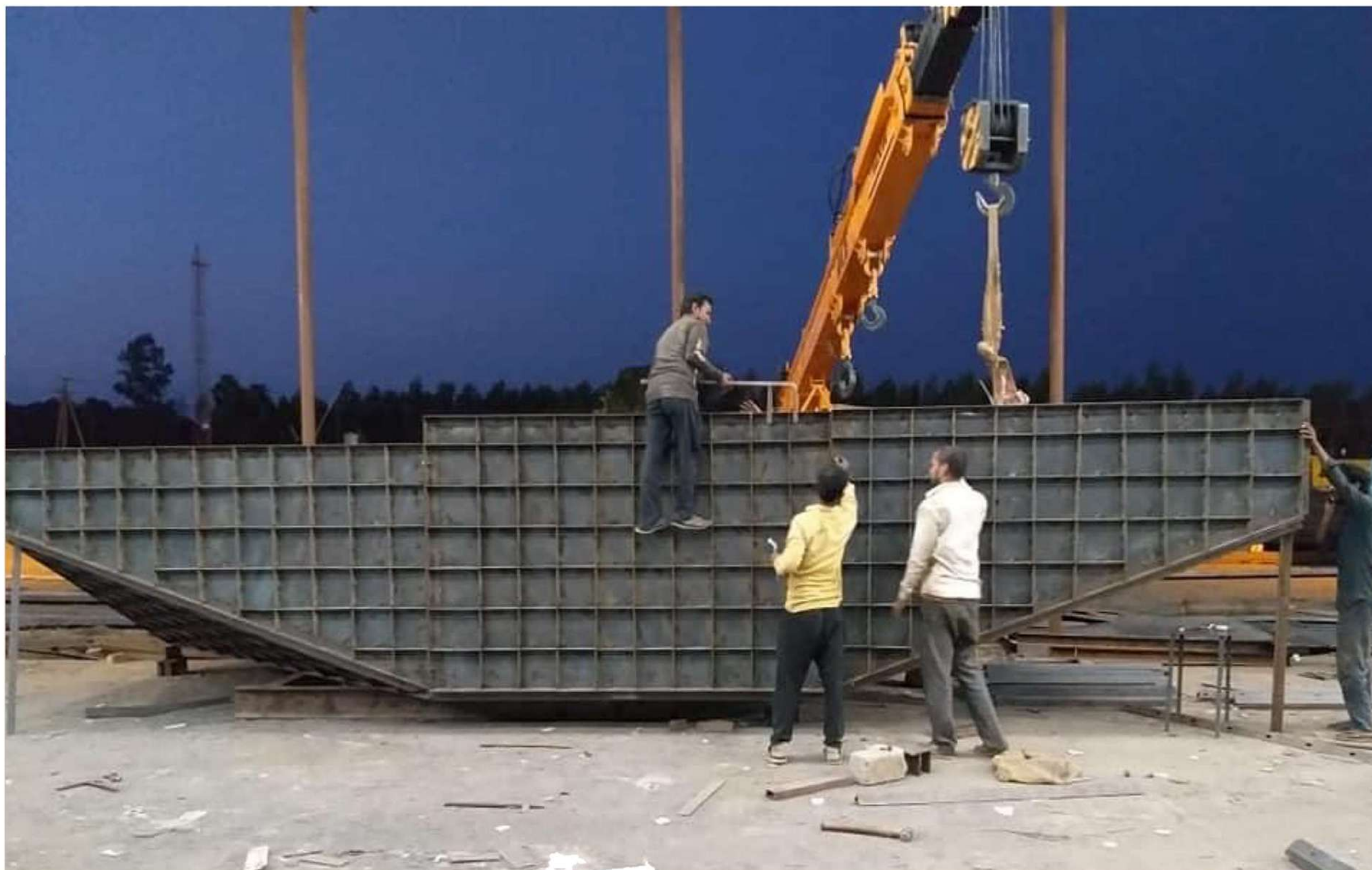
Processing Facilities

- Cutting: Optical Profile, PUG & Plasma Cutting Machine
- Radial Drill Machines up-to 38 mm
- Magnetic Drill Machines up-to 32 mm
- MIG Welding Machines-majority European Brands
- TIG Welding Machines, Welding Rectifiers
- Horizontal Boring Machine with DRO – Spindle Dia 80 mm and Table Size 1100 x 1100 mm
- Lathe Machine
- Shot Blasting facility to accommodate 2.5 x 2.5 x 3.0 Mtr. job
- Plate Bending Machine Capacity 20mm Thk x 2.5 Mtr. wide
- Power Hacksaw Machine
- Air Compressors
- Electrode Drying Ovens
- Power Back Up - 125 KVA (Green Genset)

Process Control Facilities

- Welding as per ASME Sect. IX
- WPS, PQR, WPQ as per ASME Section IX
- Measuring & Monitoring Devices Calibrated from NABL Approved Labs
- Effective Project Management ensuring control of critical inspection points





Some key features of our facilities are:

Systems and Accreditation TM

At AMR Engineering we are passionate about achieving quality outcomes and delivering smart solutions for every challenge our clients present to us.

We are committed to exceeding expectations by delivering results of the highest quality, evident in our dedication to both certification of and compliance with the following systems:

NON-DESTRUCTIVE TESTING

Depending on your needs, AMREng. can provide NATA accredited NDT certification. Testing can include Magnetic particle, Ultrasonic and Dye penetration testing.

Testing Facilities



Baglihar Hydro Electric Project



Kashang Hydro Electric Project



Vishnuprayad Hydroelectric Project

- In House Testing facilities such as Die Penetration testing, Pneumatic Testing, Hydraulic Testing
- Physical & Chemical Testing of Material from NABL approved Labs.
- UT & Radiography testing services are hired from approved agencies.
- In house inspection facilities include surface table, comparators, inspection tools, gauges and fixtures.
- Third Party Inspection (if required) by Agencies like DNV, LRA, BVIS, UHDE, ABS, TuV
- AS/NZS ISO 9001:2015 Quality management systems (certified)
- AS/NZS ISO 3834:2008 Quality requirements for fusion welding of metallic materials (compliant)
- In-house 8m x 18m X-Ray Bunker for on-site NDT
- In-house 8m x 18m Hydro testing bunker
- Multiple overhead cranes (up to 25TN each)
- Multiple sub-arc welding machines

Certifications

- ISO 9001 – Quality Management Systems Certified
- OHSAS 18001 – OH&S Management Systems (Stage 2 Certification Audit will be conducted in July 2014)
- ISO 14001 – Environmental Management Systems (Stage 2 Certification Audit will be conducted in July 2014)
- CM3 Certified
- Achilles Certified

Our Focus

In line with these systems and certification, we deliver high quality outcomes for our clients through implementation of each system in accordance with the client's requirements. To ensure continued success, we maintain a constant focus across all systems in three key areas:

- continual improvement
- safe and high-quality work practices
- on-going training and professional development for all staff

At AMR Engineering works we are passionate about achieving quality outcomes and delivering smart solutions to our client's needs and challenges. We are a proud engineering fabrication company committed to exceeding client's expectations by delivering products of the highest quality on time and at a competitive price.

Our business has an outstanding track record of partnering with our clients to deliver results in all facets of engineering; from quoting and designing to fabricating and painting. We take great pride in our work and are firmly committed to delivering impressive results for our clients every time. Our commitment to clients, our competitive pricing, and our proven ability to think laterally places Smart Fabrication at the forefront of the engineering and metal fabrication industries.

Our Team

Our team has over 40 years of quality assurance / quality control experience in the fabrication and welding industry. We have experienced Project Management Team, Engineers, Certified Welders, Fabricators, Riggers, Gas Cutters, Insulators, Scaffolders, Supervisors, Inspectors & Helpers. The team has previously worked in a vast range of locations Pan India, Kuwait & Oman.

Our Capabilities

We offer complete traceability for all projects, and can produce a range of documents to suit the individual needs of our clients. We will work with you from the beginning to determine your project requirements, from which we can develop a Quality Plan and Inspection & Test Plan. Throughout the project we provide full accessibility with effective communication, before delivering the final Manufacturer's Data Report (MDR) complete with all traceability required.

Mechanical Contracting



Machining, Fabrication
& Erection



Surge Tanks



Piping



Skid Mounted Equipments



Manifolds



Frac Tanks



Test Separators



Mud Tanks



Offshore LQS Skid



Storage Tanks



Burner Booms



Portable Cabins

Design Build

As a design-build organization, MAK Mechanical is committed to resolving constructability issues before they become costly expenses. Our awareness of project schedules and budgets is an integral component to our design-build services program. During each project, we help control costs by reducing administrative burdens and improving risk management.

Our capabilities include:

- Leading project coordination process
- Generating precise shop drawings for submittal / construction
- Implementing laser-scanning technology to accurately field-measure millions of data points
- Providing accurate, detailed material lists for precise ordering and less wasted material
- Delivering precise fabrication sheets to any of our fabrication shops
- Designing hangers and supports—large and small
- Utilizing software, such as online meeting platforms and cloud-based storage, to manage project files and maintain constant accessibility for all information

Our Factory Our Facilities & Projects Glimpse

Manufacturing Facilities

One location with 100,000 Sq. ft. Area under Crane & alternate power back up – 125KVA Green Gen-set Well Equipped Material Handling Facilities EOT Cranes of Capacity 3T, 5T, 10T & 20T Proximity to allied facilities such as Heat Treatment, Machining & Testing



Baglihar Hydro Electric Project

Baglihar Hydroelectric Power Project, is a run-of-the-river power project on the Chenab River in the Ramban district of Jammu and Kashmir, India. The first power project executed by the Jammu and Kashmir Power Development Corporation, it was conceived in 1992 and approved in 1996, with construction begun in 1999. The project was estimated to cost US\$1 billion. The project consists of two-stage of 450MW each.



Kashang Hydro Electric Project

The 243 MW Integrated Kashang Hydroelectricity Project is proposed on the Kashang and Kerang streams- the right bank tributaries of Satluj River in Morang Tehsil of District Kinnaur in Himachal Pradesh.



Vishnuprayag Hydroelectric Project

The Vishnuprayag hydroelectric project is a 400 MW run-of-the-river project, located in Uttarakhand. The project comprised of a 17 m high concrete diversion dam, desilting chambers, a 4 m dia. tunnel, a surge shaft and 1,491-m long steel-lined pressure shaft.



Bina Thermal Plant

Bina Thermal Power Plant is a coal based thermal power project located at Bina Etawa in Sagar district in Indian state of Madhya Pradesh. The power plant is one of the coal based power plants of Jaypee Group. Current talks of this power plant being sold to Jindal owned JSW Energy are under progress.



Nigree Thermal Plant

Jaypee Nigrie Super Thermal Power Project comprising 2 x 660 MW Super-critical Unit will be set up by JPVL at a site in Nigrie - Village, Tehsil - Deosar, District - Singrauli in Madhya Pradesh. The expected date of commissioning for Unit - I and Unit - II are Nov 2013 and March 2014 respectively.



BHEL Jagdishpur

Fabrication Bowl Mill at BHEL Plant



JSW Dolvi Plant MUMBAI

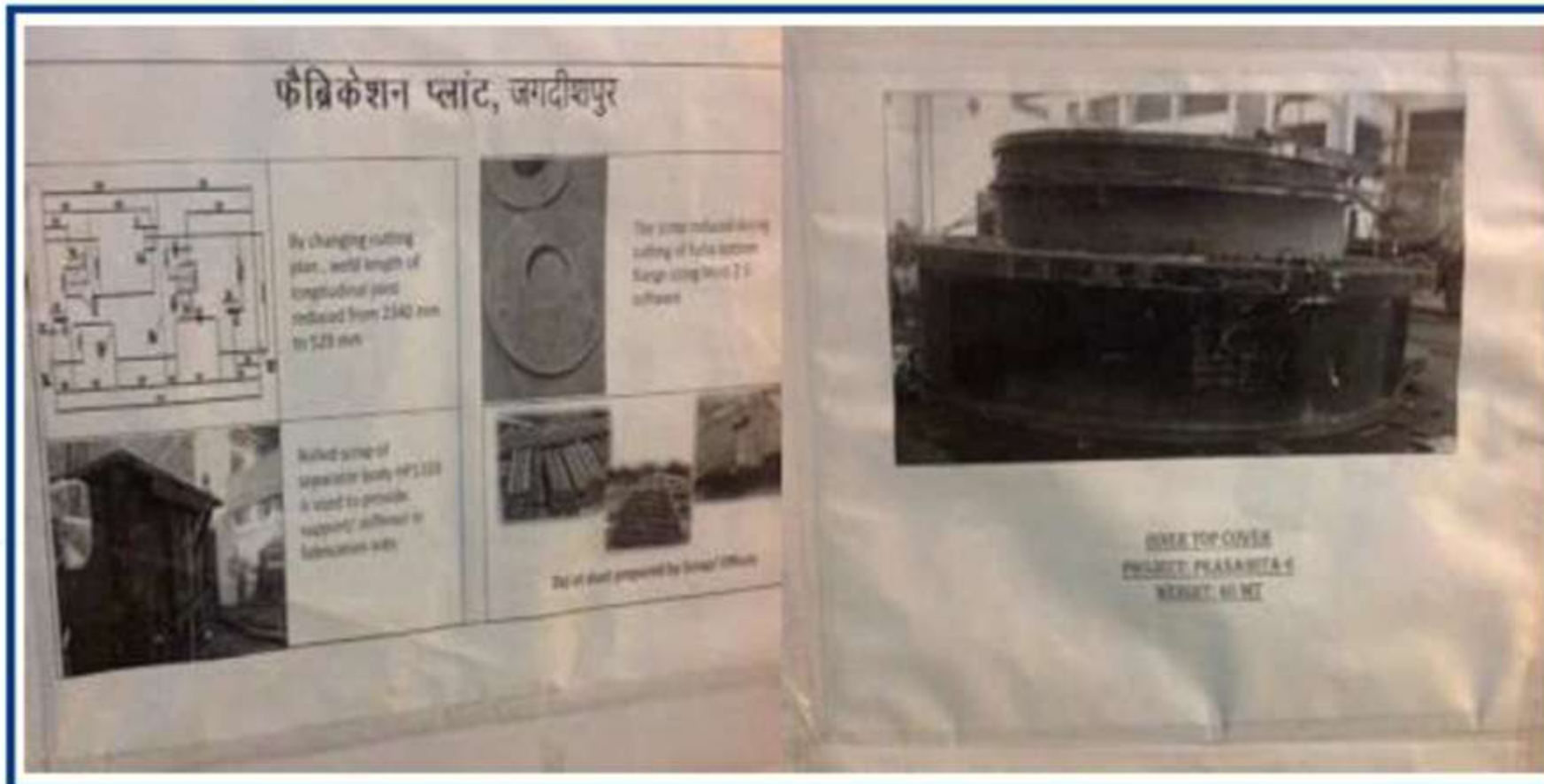


Erection of junction house in JSW Dolvi plant

Penstock Ferrule at Baglihar Project (India)



Fabrication of duct, bowl-mill at Bhel Plant Jagdishpur (India)



Bowl mil job in BHEL, hydrotesting of pipeline in L&T project



PROJECTS- UNDER EXECUTION

- KARNAL MILK FOODS LTD.
- HARSH RAJ FROZEN FOODS PVT. LTD.
- THE MALT COMPANY (INDIA) PVT. LTD.
- STERLING AGRO INDUSTRIES LTD.
- REPUTE TECHNOLOGY UNA
- NARAYANA AGRO FOOD LIMITED
- FOREMOST DAIRIES PVT. LTD.
- MURLI KRISHANA FOODS PVT. LTD.
- ZEON LIFE SCIENCES LTD.
- GOOD RICH CARBOHYDRATES LTD.
- JAYSHRI GAYATRI FOOD PRODUCTS PVT LTD
- JGF INDUSTRIES PVT LTD.
- SKA DAIRY FOOD PVT LTD UNIT-I
- SKA DAIRY FOOD PVT LTD UNIT-I I
- SARDHANA DAIRY & FOOD PVT LTD
- ALFA MILK FOODS PVT. LTD.
- FOOD & BIOTECH ENGINEERS (INDIA) PVT LTD.
- SHRI SAMRATH ENGINEERING PVT LTD.